

MATTHEW WOODMAN

On the Election of Our Immersion

When **Matthew Woodman** is not teaching at California State University, Bakersfield, he is cultivating his collection of Moon Songs and tending to his California native garden. He recommends *Arctostaphylos densiflora* (Howard McMinn manzanita) and *Heteromeles arbutifolia* (toyon) as starter plants for anyone who wants to give native gardening a try. *Salvia apiana* (white sage) is upset it didn't make the list, but it's a bit unruly for beginners.

Citizens!

We will never be this full again ...

Thanks to your formless modality
we have achieved tumescence.

The calyx assembles.

The feast approaches.

Some allege that we are premature.
That it is possible to ripen still.

I say, the fruit not picked is lost.
Is not fruit at all.

Some assert that our hunger is best sated in darkness
behind drawn shades
and locked doors.

I say, our tongues must taste
in color!
In sound!

Some accuse us of eroding standards
of decency and distance,
of elevating the profane.

I say, reflect not on whether or what or who.

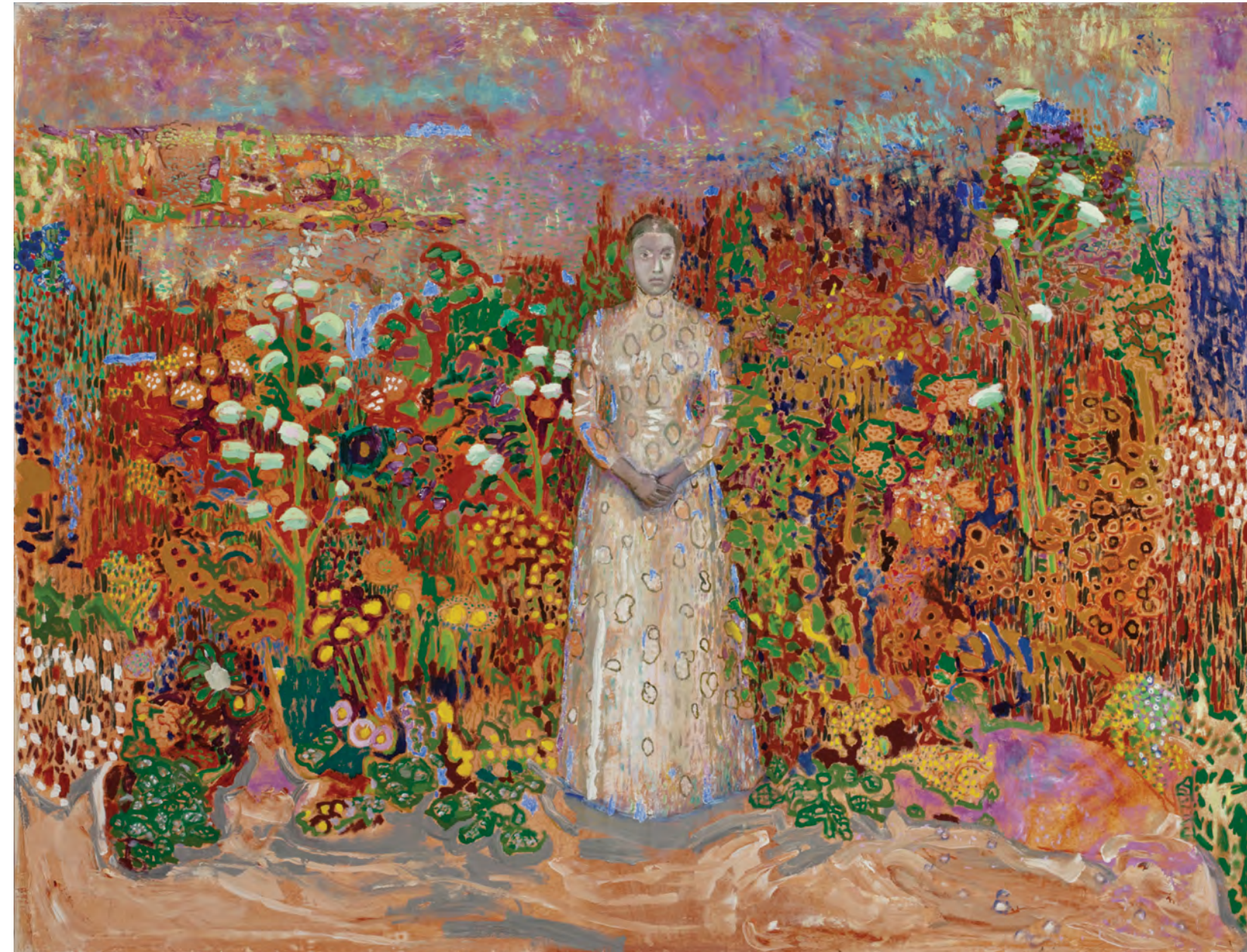
Loosen your imperatives!

Be profligate and profuse!

We are the moon!

FRANK GALUSZKA

Inga, 2011
acrylic on canvas 65 x 85 in



courtesy: the artist